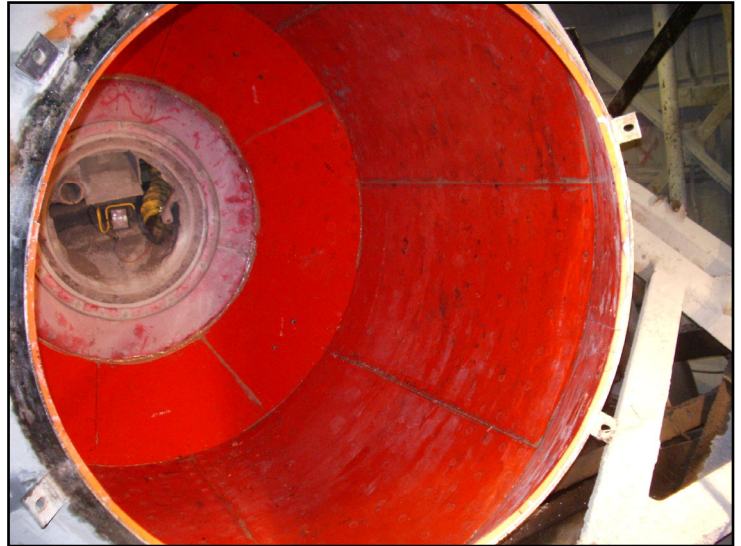


Concrete Ready Mix Plant Liners

**Durex® provides custom low-cost solution liner systems.
Liners are designed for your specific applications.**

Durex® produces a line of wear resistant products for long lasting protection in producers' concrete plants and concrete trucks. With many years of field experience, we supply the best material for the application to save you money in maintenance and downtime.

PLANTS: Liners and wear parts are designed to fit common wear areas in most brands of plant. Whether it is impact, abrasion, noise, or sticking we can offer you a product to greatly reduce the problem. This includes items such as central mix drum and blade liners, turn head liners, hopper and bin liners, scale liners, and dump chute liner. Durex® also makes custom sizes and shapes once dimensions are known. Standard urethane sized sheets are available for anyone who needs to cut liners to size where accurate dimensions are hard to attain.



TRUCKS: For concrete trucks we have charge hopper liners designed to fit most brands. We also make urethane discharge bibs and drum wipers that greatly outperform the typical rubber products used.

Durex® includes products that can be installed by welding, bolting or with magnetism. Urethane products are much lighter than steel allowing for easier handling and installation. Any trimming in place can be done with a sharp knife or reciprocating saw. With steel, enclosed spaces usually do not permit cutting with a torch and the steel liners have to be removed out of the enclosed bin.



**Dry Batch Plant
Cement Pipe Cover**



Concrete Batch Liners

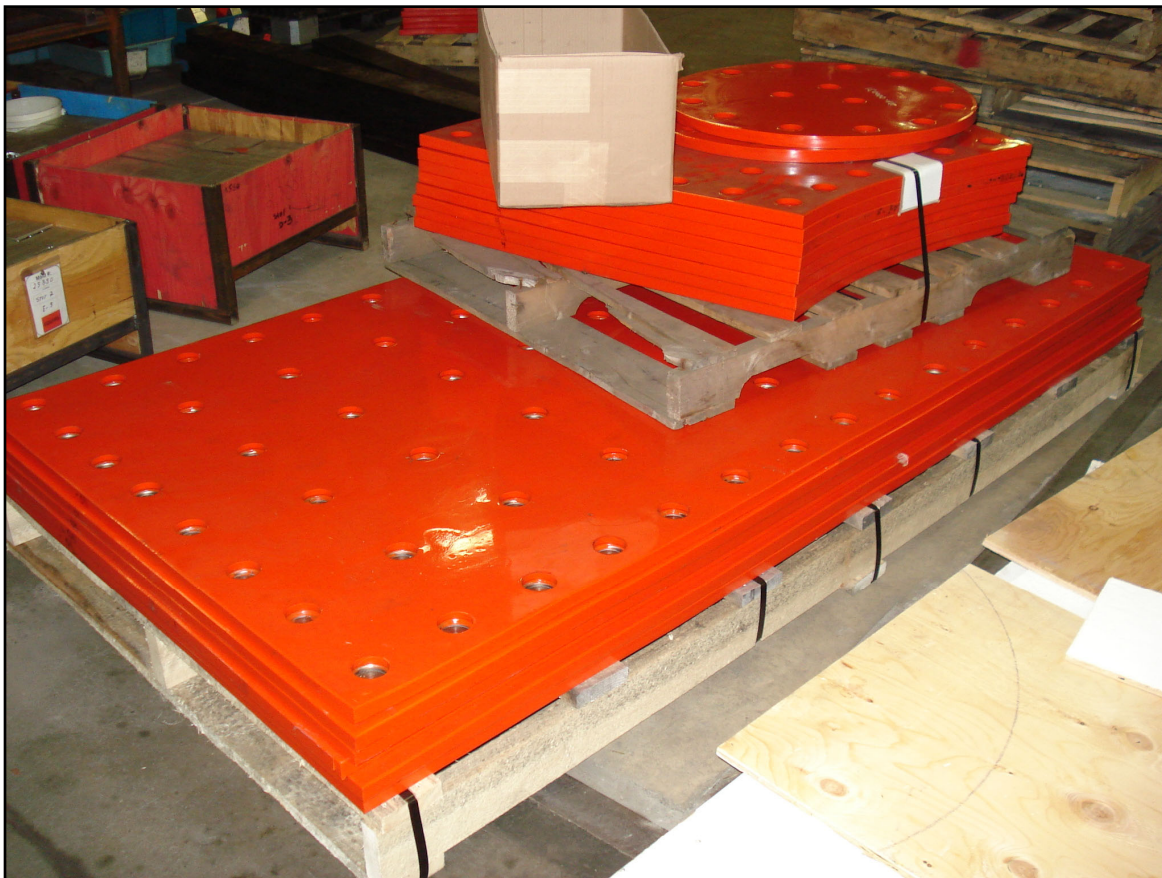
Plain Urethane & Weldable Urethane Sheets

Durex® made to order liner material is available as:

- ◆ No Backing
- ◆ Steel Backing
- ◆ Expanded Metal
- ◆ Common Urethane Sheet Sizes in Plain and Weldable Sizes:
 - ◆ 4' X 8'
 - ◆ 4' X 10'
 - ◆ 5' X 10'

Urethane liners can be supplied with urethane coated bolts for ½" and thicker sheets. These bolts are tapered for a tight fit into counter bored holes. The tight fit allows the bolts to be tightened from the back without turning.

| Recommended Liner Material & Thickness | | |
|---|--------------------------------|-------------------|
| Material | Liner Type | Overall Thickness |
| Rubber / Ceramic Durex® Unique Urethane Formula | Rotary Distributor (turn head) | 1" - 1 1/2" |
| | Aggregate Bin | 1/2" |
| | Sand Bin | 1/2" |
| | Weigh Batcher | 1/2" - 3/4" |
| | Drum | 1" |
| | Blade | 1" |
| | Dump Cone | 3/4" |
| | Loading Hopper | 3/4" |
| | Transfer Chute | 1" |



Durex Products, Inc.

112 West First Avenue

Luck, WI 54853

PHONE: 715-472-2111

FAX: 715-472-2431

Email: customerservice@durexproducts.com

Website: www.durexproducts.com

